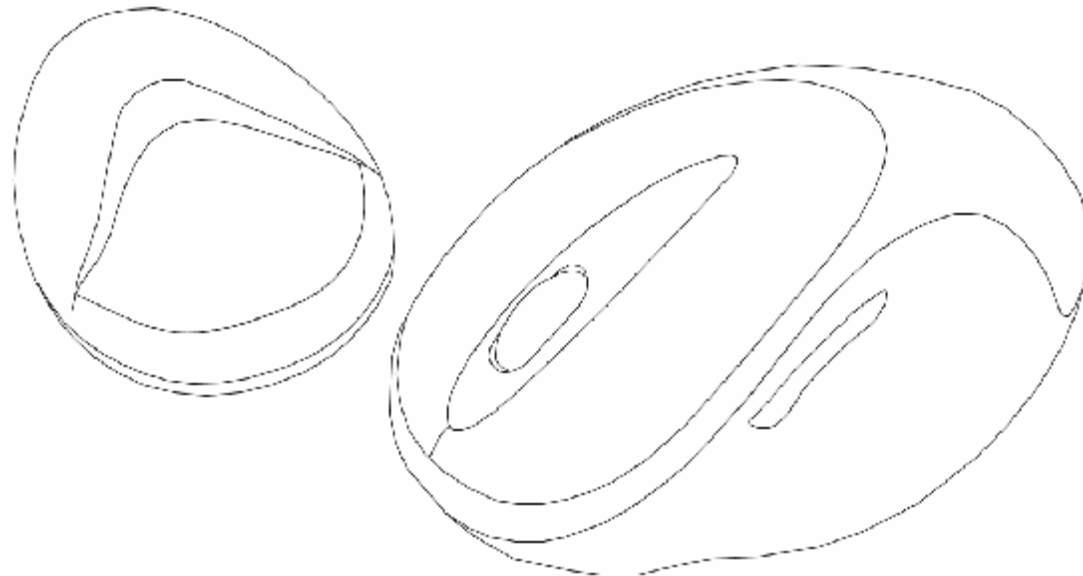




Laser Wireless Mouse

Model: LM7000W



User's Manual



User's Record:

To provide quality customer service and technical support, it is suggested that you keep the following information as well as your store receipt and this user's manual.

Date of Purchase:

Model Number:

Serial Number:

Product Rev Number (located below the UPC on the package):



Package Contents:

Your new Mouse will ship with the following items.

- § Laser Wireless Mouse
- § USB Receiver
- § Driver Software on CD
- § 2 AA Batteries
- § User's Manual
- § Warranty Information

System Requirements:

Please be sure that you meet all of the system requirements below to avoid difficulties during installation.

- § IBM PCs or 100% Compatibles
- § Windows® ME, 2000, XP
- § Available USB Port
- § CD-ROM Drive

System Specifications:

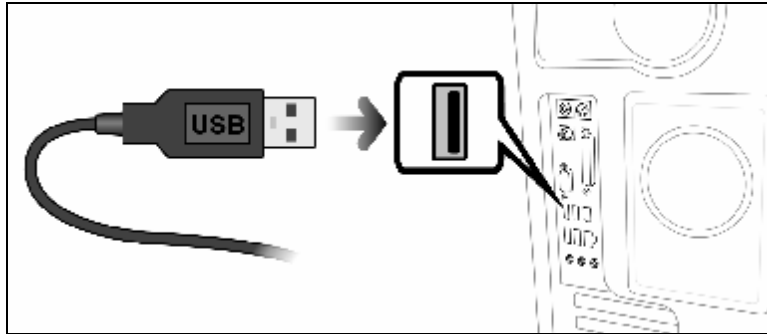
Your new Mouse complies with the following specifications.

- § 1600dpi
- § USB Interface

Hardware Installation:

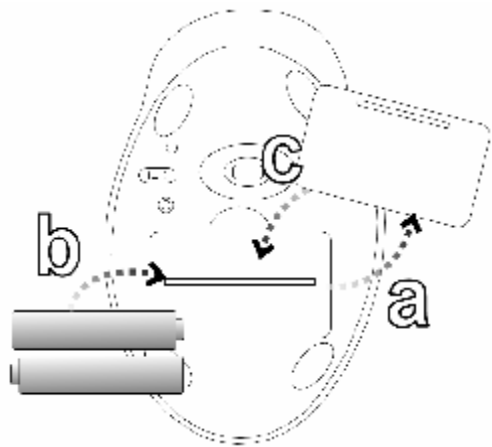
NOTE: The pictures shown in the User's Manual are for demonstration purposes only. Your computer or product may look slightly different.

1. Connect The Wireless USB Receiver To Your Computer:



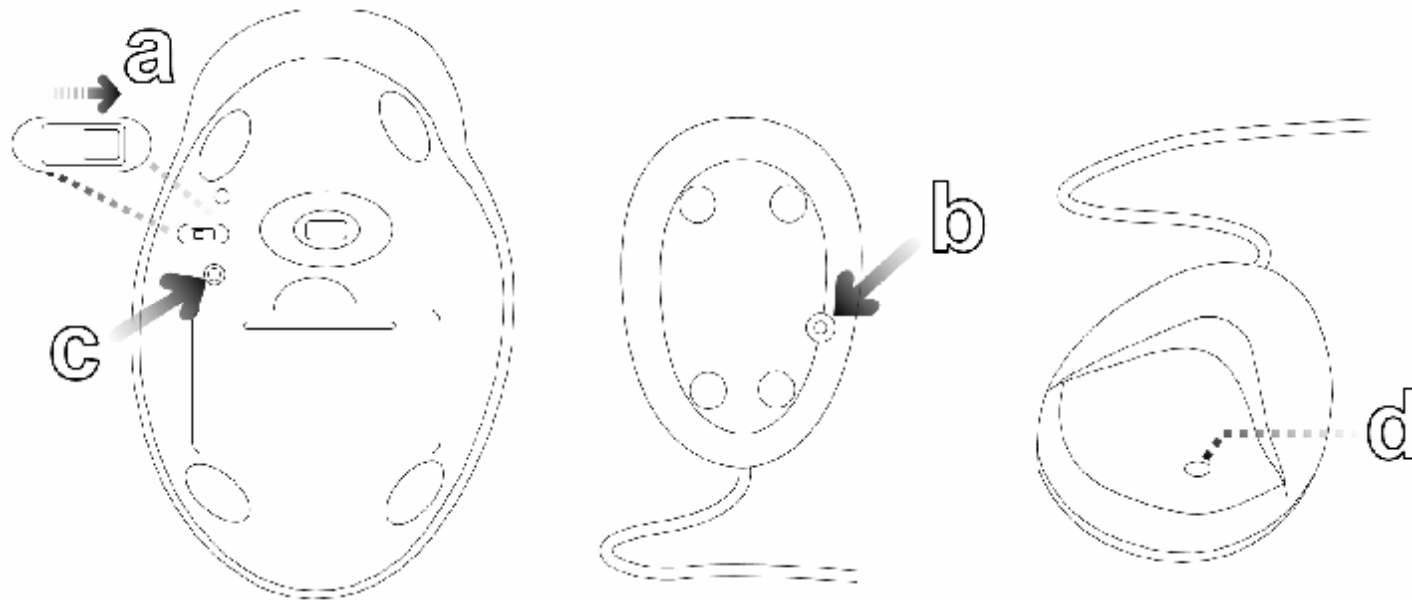
- a. Turn on your computer and wait for it to load.
- b. Connect the **Wireless USB Receiver** into an available USB port on your computer.
- c. Your computer will detect your USB device and the necessary drivers will be installed automatically.

2. Battery Installation:



- a. Remove the **Battery Compartment Cover** from the bottom of your Mouse.
- b. Install two AA Batteries into the **Battery Compartment** following the battery orientation guide printed inside the compartment.
- c. Replace the **Battery Compartment Cover** back onto your Mouse until it securely locks.

3. Establish a Connection:



- a. Press the **Connect Button** at the bottom of the Wireless USB Receiver. Your mouse will establish a connection with the receiver and is ready to be used. If a connection is not established, there might be a high level of surrounding interference, press the **Connect Button** on the bottom of your Mouse. The LED Indicator above the **Power Switch** will turn on to indicate it is scanning for a connection. The LED Indicator will turn off after a connection has been established.
- b. The **LED Connection Indicator** on the **Wireless USB Receiver** indicates the status of the connection between your Mouse and your computer:

Status	Description
LED Off	No Power/Not Connected To Computer
Solid Red	Connected/No Activity Detected
Blinking Red	Scanning For Connection
Flashing Red	Your Mouse Is In Active Mode

Software Installation:

Your Mouse comes with Wheel Mouse software which allows you to assign special functions to the 3 programmable buttons on your Mouse. To install the Wheel Mouse software, please follow the instructions below:

1. If you have installed any other mouse drivers/software onto your computer, please uninstall them prior to the installation of the Wheel Mouse software to avoid any software conflicts.
2. Place the **Driver CD** into the CD-ROM drive of your computer.
3. The Wheel Mouse setup screen will start automatically. To start the setup manually, click "Start", then "Run...", type "D:\SETUP.EXE" into the dialog box (**NOTE:** "D:\" represents the drive letter assigned to the CD-ROM drive you are using. If **D** is not the letter assigned to your CD-ROM drive, replace **D** with the appropriate drive letter.), then click "OK".
4. Follow the onscreen instruction to complete the installation. After the installation is complete restart your computer.

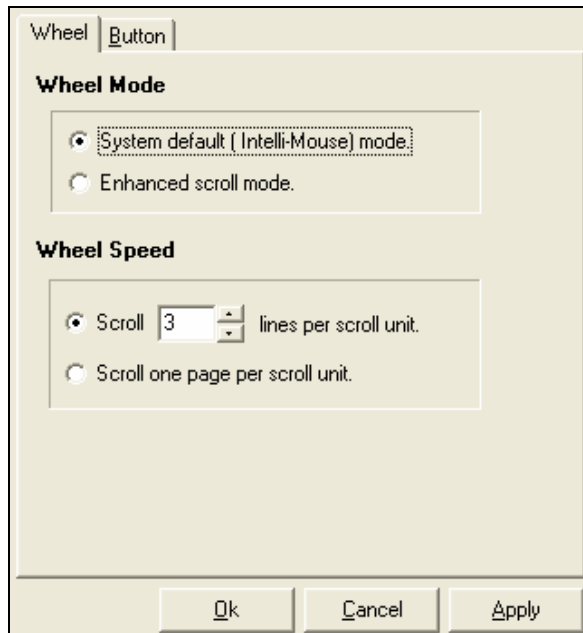
Wheel Mouse Configuration:

To configure your Mouse using the Wheel Mouse software, please follow the instruction below:

1. Make sure your Mouse is connected to your computer.
2. To open the **Wheel Mouse Setting** screen, right click the **Wheel Mouse** icon on the system tray of your desktop, and then select "Setting".



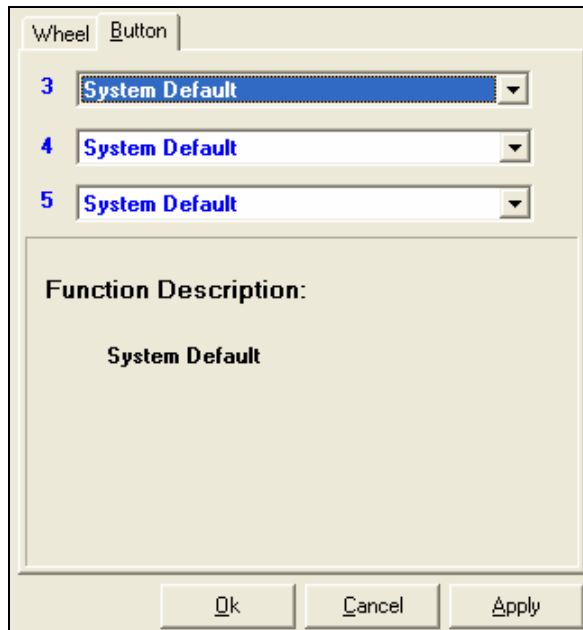
3. To configure the Scroll Wheel on your Mouse, click the “Wheel” tab.



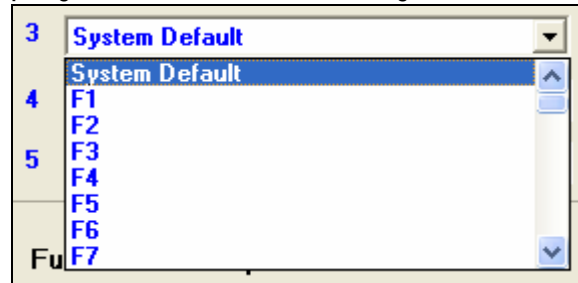
Options	Descriptions
Wheel Mode	<p>System Default (Intelli-Mouse) Mode: Select this mode to apply only the Windows® default scroll wheel options.</p> <p>Enhanced Scroll Mode: Select this mode to apply the Wheel Mouse settings to your Wireless Presenter.</p>
Wheel Speed	<p>Scroll # lines per scroll unit: Select this option, and then specify the number of lines to scroll each time you scroll the scroll wheel on your Mouse.</p> <p>Scroll one page per scroll unit: Select this option to scroll through one page each time you scroll the scroll wheel on your Mouse.</p>

4. After you make all your selections, click “Apply” to save the changes. To close the screen, click “OK”.

- To configure the programmable buttons on your Mouse, click the "Programmable Button" tab.



Options	Descriptions
Button Selections	Click the drop-down menu for the button you wish to program and then select which of the pre-programmed functions to assign to that button.



Function Description	This box shows the description of the function you selected. NOTE: For the function "Connect To Internet", please make sure to include "http://" before the address when you enter the web address you wanted to connect to.
----------------------	--

- After you have made all of your selections, click "Apply" to save the changes. To close the screen, click "OK".



FCC Information:

FCC

This equipment has been tested and found to comply with limits for Class B digital device pursuant to Part 15 of Federal Communications Commission (FCC) rules.

FCC Compliance Statement

These limits are designed to provide reasonable protection against frequency interference in residential installation. This equipment generates, uses, and can radiate radio frequency energy, and if not installed or used in accordance with the instructions, may cause harmful interference to radio communication. However, there is no guarantee that interference will not occur in television reception, which can be determined by turning the equipment off and on. The user is encouraged to try and correct the interference by one or more of the following measures:

- § Reorient or relocate the receiving antenna
- § Increase the separation between the equipment and the receiver
- § Connect the equipment into an outlet on a circuit different from that to which the receiver is connected to.



CAUTION!

The Federal Communications Commission warns the user that changes or modifications to the unit not expressly approved by the party responsible for compliance could void the user's authority to operate the equipment.



Warranty Information:



Gear Head, LLC warrants that this product shall be free from defects in materials and workmanship for the reasonable lifetime of the product. If the product is defective, Gear Head, LLC's sole obligation under this warranty shall be at its election, subject to the terms of this warranty, to repair or replace any parts deemed defective. This warranty is for the exclusive benefit of the original purchaser and is not assignable or transferable. **THIS WARRANTY IS MADE IN LIEU OF ALL OTHER WARRANTIES, EXPRESS OR IMPLIED, AND ANY IMPLIED WARRANTIES, INCLUDING THE IMPLIED WARRANTIES OF MERCHANTABILITY AND FITNESS FOR A PARTICULAR PURPOSE, ARE LIMITED TO THE TERMS OF THIS WARRANTY, UNLESS OTHERWISE PROHIBITED BY LAW.**

Exclusions

To the fullest extent permitted by law, Gear Head, LLC expressly disclaims and excludes from this warranty any liability for damages, including but not limited to general, special, indirect, incidental, consequential, aggravated, punitive or exemplary damages, and economic loss (even if Gear Head™ is informed of their possibility), third party claims against you, including for any loss or damages, and claims or damages related to loss of, or, damage to, your records or data. This warranty does not apply to any product the exterior of which has been damaged or defaced. This warranty will be voided by misuse, improper physical environment, improper repair, acts of God, war or terror, commercial use, and improper service, operation or handling.

Technical Support

Gear Head™ provides Technical Support Monday - Friday from 9:00 am – 5:30 pm Eastern Time. Before calling, please make sure you have available the Model # (located on the front page of your User's Manual) and information regarding your computer's operating system.

Please contact our technicians at
1-866-890-7115

Return Merchandise for Service

Any claim under this warranty must be made in writing to Gear Head, LLC, at the address provide by our technician, within 30 days after the owner discovers the circumstances giving rise to any such claim, and must include a copy of this warranty document, a receipt or copy of your invoice marked with the date of purchase, and the original packaging. You may obtain service by calling the technician for a Return Merchandise Authorization (RMA) number. The RMA number must be prominently displayed on the outside of the shipping carton and the package must be mailed to Gear Head™ postage prepaid.