



Bluetooth® Keyboard & Mouse For Mac®

Model #: KBL8000WRBT



User's Manual

PID # 121293-109336
Rev. 070610

All brand name and trademarks are the property of their respective owners

USER'S RECORD:

To provide quality customer service and technical support, it is suggested that you keep the following information as well as your store receipt and this user's manual.

Date of Purchase: _____

Model Number: _____

Serial Number: _____

Product Rev Number (located below the UPC on the package): _____

FCC RADIATION NORM:

FCC

This equipment has been tested and found to comply with limits for Class B digital device pursuant to Part 15 of Federal Communications Commission (FCC) rules.

FCC Compliance Statement

These limits are designed to provide reasonable protection against frequency interference in residential installation. This equipment generates, uses, and can radiate radio frequency energy, and if not installed or used in accordance with the instructions, may cause harmful interference to radio communication. However, there is no guarantee that interference will not occur in television reception, which can be determined by turning the equipment off and on. The user is encouraged to try and correct the interference by one or more of the following measures:

- Reorient or relocate the receiving antenna
- Increase the separation between the equipment and the receiver
- Connect the equipment into an outlet on a circuit different from that to which the receiver is connected to.



CAUTION!

The Federal Communications Commission warns the user that changes or modifications to the unit not expressly approved by the party responsible for compliance could void the user's authority to operate the equipment.

PACKAGE CONTENTS:

Your new Keyboard and Mouse will ship with the following items.

- Wireless Keyboard
- Optical Wireless Mouse
- 4 AA Batteries
- User's Manual
- Warranty Information

SYSTEM REQUIREMENTS:

Please be sure that you meet all of the system requirements below to avoid difficulties during installation.

- Bluetooth® Enabled Computer
- Mac®, IBM PCs or 100% Compatibles
- Mac® OS 10.3 or Above
- Windows® 2000, XP, Vista

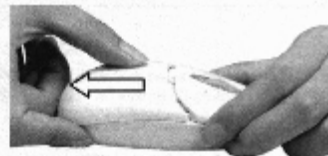
SYSTEM SPECIFICATIONS:

Your new Keyboard and Mouse complies with the following specifications.

- Bluetooth® Interface

Installing Batteries:

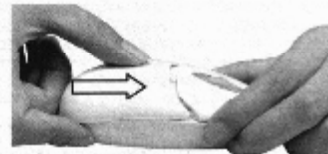
1. Remove the **Battery Compartment Cover** from your Mouse.



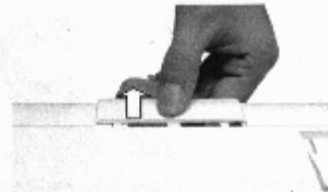
2. Install two **AA Batteries** into the **Battery Compartment** following the battery orientation guide in the battery bay.



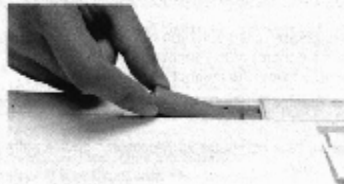
3. Replace the **Battery Compartment Cover** back onto your Mouse until it securely locks.



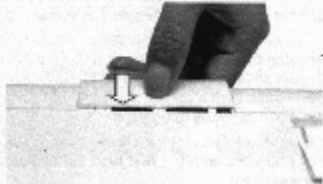
4. Remove the **Battery Compartment Cover** from the bottom of your Keyboard.



5. Install two **AA Batteries** into the **Battery Compartment** following the battery orientation guide in the battery bay.



6. Replace the **Battery Compartment Cover** back onto your Keyboard until it securely locks.



7. Proceed to the **Establish a Connection** section of this manual.

Establish a Connection:

For Windows® Users

Before connecting your Keyboard and Mouse, please make sure you have properly setup and enabled the Bluetooth® Radio (e.g. a Bluetooth® dongle) onto your computer. To pair your Keyboard and Mouse with your computer, please follow the instructions below:

1. Turn on your computer and enable the Bluetooth® Radio function on your computer if you have not yet done so.
2. Open the Bluetooth® software you use on your computer for Bluetooth® device pairing and set it ready to search for a Bluetooth® device.
3. Turn on your Mouse by switching the **Power Switch** on the bottom of your Mouse to the **ON** position.
4. Press the **Connect Button** on the bottom of your Mouse to make your Mouse searchable, and then place your Mouse **within 3 feet** from the Bluetooth® dongle that you are using to pair with your Mouse.
5. Search for your Mouse on your computer using the Bluetooth® software. Follow the onscreen instructions to complete the Bluetooth® pairing process (**NOTE:** For more information, please refer to your Bluetooth® Radio User's Manual for more instructions on how to pair it with your Mouse). Your Mouse is now ready to be used.
6. Press the **Connect Button** on the left side of your Keyboard for 3 seconds to make your Keyboard searchable, and then place your Keyboard **within 3 feet** from the Bluetooth® dongle that you are using to pair with your Keyboard.
7. Search for your Keyboard on your computer using the Bluetooth® software. Follow the onscreen instructions to complete the Bluetooth® pairing process (**NOTE:** For more information, please refer to your Bluetooth® Radio User's Manual for more instructions on how to pair it with your Keyboard). Your Keyboard is now ready to be used.

For Mac® OS Users

Your operating system natively supports Bluetooth® device pairing. This section demonstrates one of the easiest ways to connect your Keyboard and Mouse to your computer.

NOTE: The procedures listed below are for demonstration only and are based on Mac® OS 10.4.8 with default settings. The procedures and screenshots may look slightly different than yours but with similar options. If you need further help on setting up a Bluetooth® device with your operating system, please refer to the User's Manual of your computer for more information.

1. Turn on your computer and make sure you have properly installed your Bluetooth® dongle (if applicable).
2. At your desktop, click the Bluetooth® icon on the top-right corner of your screen, and then select "Turn Bluetooth On" to enable the Bluetooth® feature. Click the Bluetooth® icon on the top-right corner of your screen again, and then select "Setup Bluetooth Device..." to open the Bluetooth Setup Assistant dialog box. At the welcome screen, click the "Continue" button to proceed.



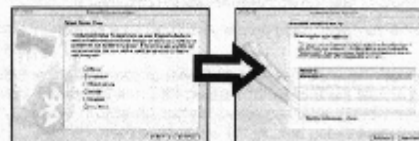
3. Turn on your Mouse by switching the Power Switch on the bottom of your Mouse to the ON position and press the Connect Button on the bottom of your Mouse to make your Mouse searchable, and then place your Mouse within 3 feet from your computer (or the Bluetooth® dongle if applicable) that you are using to pair with your Mouse.
4. Select "Mouse" for device type, and then click the "Continue" button to start searching for your Mouse. Once your computer has located your Mouse (your mouse is indicated with the ID "BTMS-E09D" on the device list), click the "Continue" button to start pairing.



5. Once the pairing process is complete, your Mouse is ready to be used. Click the "Set Up Another Device" button to set up your Keyboard.



6. Press the Connect Button on the left side of your Keyboard for 3 seconds to make your Keyboard searchable, and then place your Keyboard within 3 feet from the Bluetooth® dongle that you are using to pair with your Keyboard.
7. Select "Keyboard" for device type, and then click the "Continue" button to start searching for your Keyboard. Once your computer has located your Keyboard (your Keyboard is indicated with the ID "BTKB-0025" on the device list), click the "Continue" button to start pairing.



8. Once your Keyboard has been detected, your computer will generate a passkey for you to type in with the keyboard. Type in the passkey for your Bluetooth® Keyboard and then hit the "Return" key on your Keyboard.



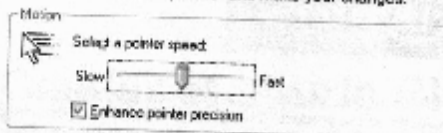
9. Once the pairing process is complete, click the "Quit" button to close the Bluetooth® Setup Assistant and your Keyboard is ready to be used.



Changing the Speed of Your Mouse:

Changing Mouse Properties in Windows®

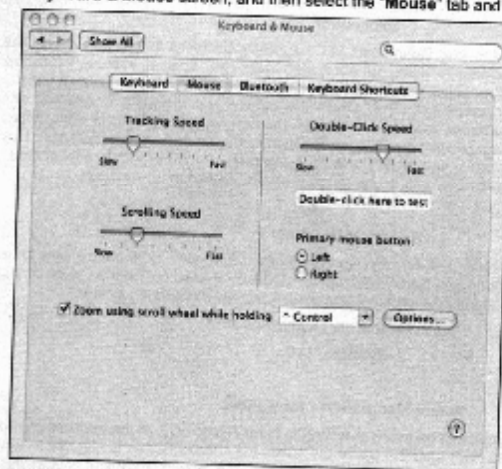
In addition to the built-in features of your Mouse, you can also adjust the speed of the cursor or the scroll button features in Windows®. To change the speed of the cursor in Windows®, open the "Control Panel", and double-click the "Mouse" icon to open the mouse properties screen, and then select the "Pointer Options" and make your changes.



NOTE: The screenshot shown above are for demonstration only and your screen may look slightly different but with similar options.

Changing Mouse Properties in Mac®

In addition to the built-in features of your Mouse, you can also adjust the speed of the cursor or the scroll button features in Mac®. To change the speed of the cursor in Mac®, open the "System Preferences". At the "System Preferences" screen, click the "Keyboard & Mouse" icon to open the "Keyboard & Mouse" screen, and then select the "Mouse" tab and make your changes.



NOTE: The screenshot shown above are for demonstration only and your screen may look slightly different but with similar options.



WARRANTY INFORMATION:



Gear Head, LLC warrants that this product shall be free from defects in materials and workmanship for the reasonable lifetime of the product. If the product is defective, Gear Head, LLC's sole obligation under this warranty shall be at its election, subject to the terms of this warranty, to repair or replace any parts deemed defective. This warranty is for the exclusive benefit of the original purchaser and is not assignable or transferable. THIS WARRANTY IS MADE IN LIEU OF ALL OTHER WARRANTIES, EXPRESS OR IMPLIED, AND ANY IMPLIED WARRANTIES, INCLUDING THE IMPLIED WARRANTIES OF MERCHANTABILITY AND FITNESS FOR A PARTICULAR PURPOSE, ARE LIMITED TO THE TERMS OF THIS WARRANTY, UNLESS OTHERWISE PROHIBITED BY LAW.

Exclusions

To the fullest extent permitted by law, Gear Head, LLC expressly disclaims and excludes from this warranty any liability for damages, including but not limited to general, special, indirect, incidental, consequential, aggravated, punitive or exemplary damages, and economic loss (even if Gear Head™ is informed of their possibility), third party claims against you, including for any loss or damages, and claims or damages related to loss of, or, damage to, your records or data. This warranty does not apply to any product the exterior of which has been damaged or defaced. This warranty will be voided by misuse, improper physical environment, improper repair, acts of God, war or terror, commercial use, and improper service, operation or handling.

Technical Support

Gear Head™ provides Technical Support Monday - Friday from 9:00 am - 5:30 pm Eastern Time. Before calling, please make sure you have available the Model # (located on the front page of your User's Manual) and information regarding your computer's operating system.

Please contact our technicians at

1-866-890-7115

Return Merchandise for Service

Any claim under this warranty must be made in writing to Gear Head, LLC, at the address provided by our technician, within 30 days after the owner discovers the circumstances giving rise to any such claim, and must include a copy of this warranty document, a receipt or copy of your invoice marked with the date of purchase, and the original packaging. You may obtain service by calling the technician for a Return Merchandise Authorization (RMA) number. The RMA number must be prominently displayed on the outside of the shipping carton and the package must be mailed to Gear Head™ postage prepaid.