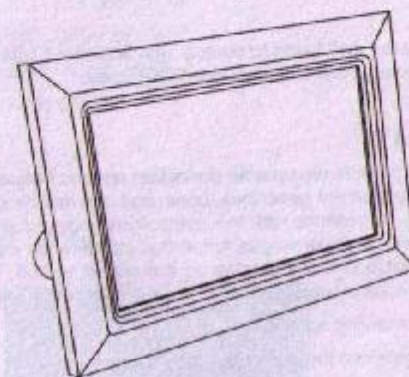




# **8.5" Digital Photo Frame**

**Model #: 8-5DPF150**



**User's Manual**

All brand name and trademarks are the property of their respective owners

### USER'S RECORD:

To provide quality customer service and technical support, It is suggested that you keep the following information as well as your store receipt and this user's manual.

Date of Purchase: \_\_\_\_\_

Model Number: \_\_\_\_\_

Serial Number: \_\_\_\_\_

Product Rev Number (located below the UPC on the package): \_\_\_\_\_

### FCC RADIATION NORM:

#### FCC

This equipment has been tested and found to comply with limits for Class B digital device pursuant to Part 15 of Federal Communications Commission (FCC) rules.

#### FCC Compliance Statement

These limits are designed to provide reasonable protection against frequency interference in residential installation. This equipment generates, uses, and can radiate radio frequency energy, and if not installed or used in accordance with the instructions, may cause harmful interference to radio communication. However, there is no guarantee that interference will not occur in television reception, which can be determined by turning the equipment off and on. The user is encouraged to try and correct the interference by one or more of the following measures:

- Reorient or relocate the receiving antenna
- Increase the separation between the equipment and the receiver
- Connect the equipment into an outlet on a circuit different from that to which the receiver is connected to.



#### CAUTION!

The Federal Communications Commission warns the user that changes or modifications to the unit not expressly approved by the party responsible for compliance could void the user's authority to operate the equipment.

### PACKAGE CONTENTS:

Your new Digital Photo Frame will ship with the following items:

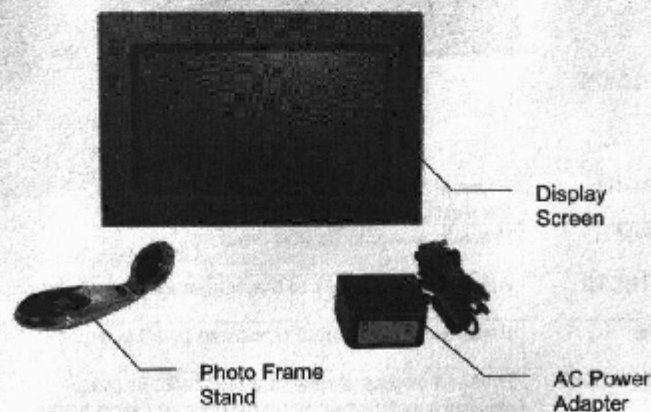
- Digital Photo Frame 8.5" LCD
- AC Power Adapter
- User's Manual
- Warranty Information

### SYSTEM SPECIFICATIONS:

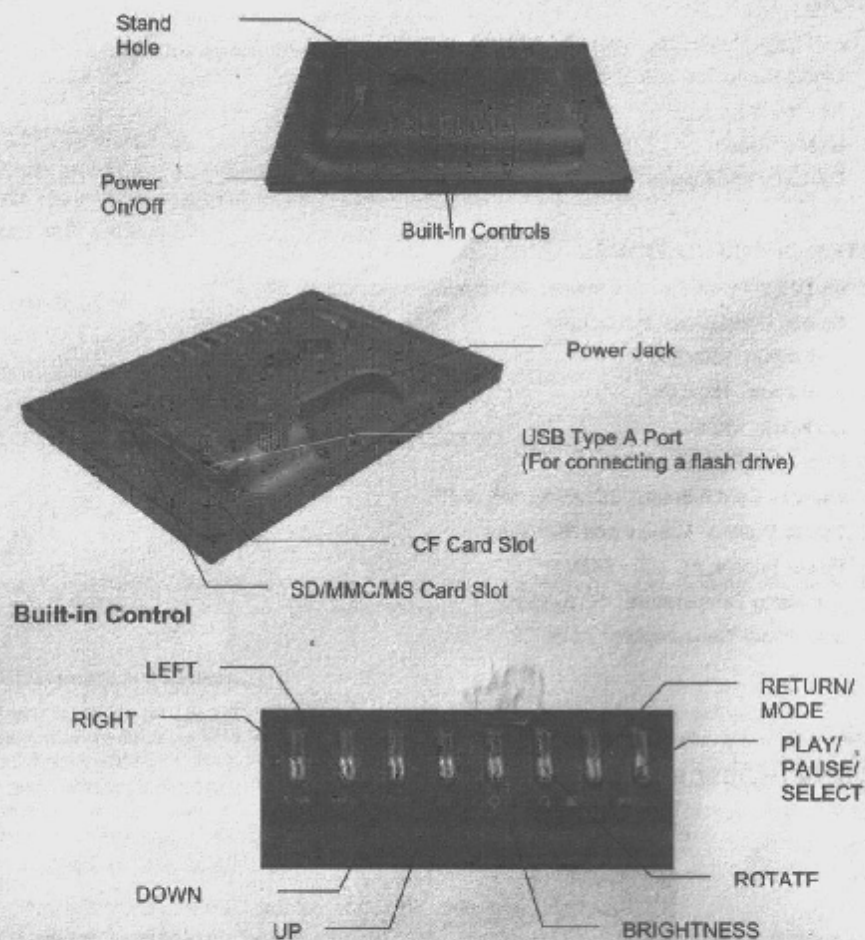
Your new Digital Photo Frame complies with the following specifications:

- Screen Dimensions: 8.5 inches
- Resolution: 480x234
- Brightness: 150 cd/m<sup>2</sup>
- Contrast: 150:1
- Photo File Format: JPEG
- Memory Card Formats: SD, MMC, MS or CF
- Usage Options: Manual and Slideshow
- Power Supply: AC 100 - 240V DC 5V
- Operating Temperature: -5C to +50C
- Max Power Consumption: 7.5W

### HARDWARE DESCRIPTION:



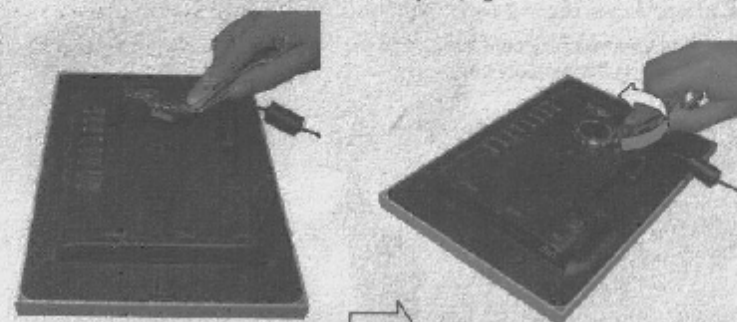




<b>LEFT/RIGHT</b>	Press to navigate left and right. Press to view the previous photo or the next photo.
<b>UP/DOWN</b>	Press to navigate up and down.
<b>BRIGHTNESS</b>	Adjust the brightness of the screen for your digital photo frame.
<b>ROTATE</b>	Press to rotate a photo clockwise by 90 degrees.
<b>RETURN/MODE</b>	Press to display photos in thumbnails, or press to return back to the original screen when you turn on your photo frame.
<b>PLAY/PAUSE/SELECT</b>	Display photos one by one or pause while photos are being displayed. Press to select an option.

## HARDWARE INSTALLATION:

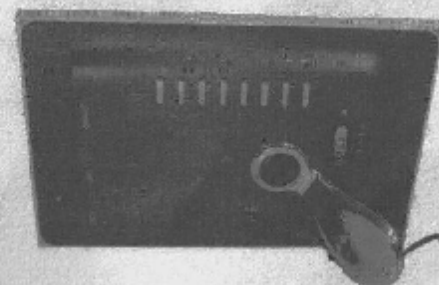
1. Attach the enclosed Stand onto the back of your Digital Photo Frame as shown below.



2. Connect the power jack of the enclosed AC Power Adapter to your Digital Photo Frame, and plug the other end into an electrical outlet.



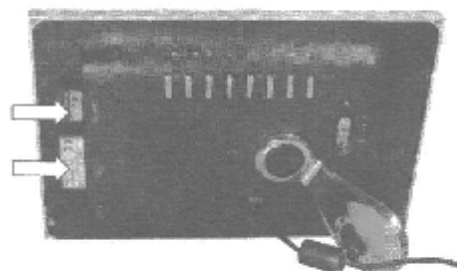
3. Place your Digital Photo Frame on a flat and steady surface.



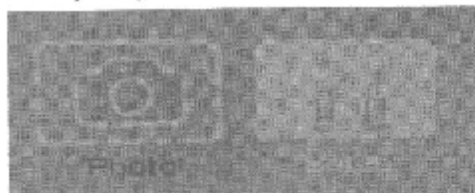
4. Your Digital Photo Frame is now ready to be used.

### USING THE DIGITAL PHOTO FRAME:

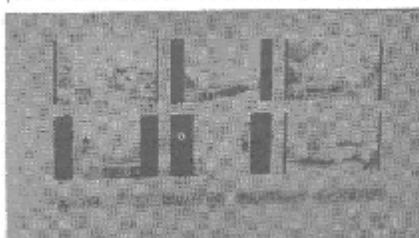
1. Make sure that you have properly connected the AC Power Adapter; refer to the Hardware Installation Instructions above if necessary.
2. Carefully insert your memory card into the proper slot as shown below following the orientation guide on the memory card.



3. Turn on your Digital Photo Frame and the below screen will appear.



4. Select Photo, and your digital photo frame will display all the photos stored in the memory cards one by one.
5. Press the RETURN/MODE button in the built-in controls, and the photo frame will display the photos as thumbnails. Six thumbnails can be shown on the screen at one time.



6. Press the RETURN/MODE button in the built-in controls to return to the original start-up screen.

7. Select Setup, then press the PLAY/PAUSE/SELECT button to enter the Setup Menu-Photo Setting to change settings for your digital photo frame.



Interval Time	Set the time interval between photos when they are being displayed one by one.
Transition	Select the transitional effect for the displayed photos.
Repeat	Select whether your photos' repeat options.
Contrast	Set the contrast level of color for the screen of your digital photo frame.
OSD Language	Choose the language setting for your photo frame.
Panel	Set photos to be displayed by full screen or at a 4:3 ratio.
Reset	Change all settings back to the factory default settings.
Exit Setup Mode	Exit the Setup Menu.